



The purpose of this document to provide a brief guide to signpost staff facilities for RHCYP, DCN & CAMHs. Contents:

1. **Ward/Dept Names & Locations**
2. **Eating & Drinking**
3. **Staff Changing Rooms & Lockers**
4. **Outdoor Spaces: Courtyards & Terraces**

More Info:

- Wayfinding intranet site:
<http://intranet.lothian.scot.nhs.uk/Directory/ChildrensServices/RHCYP/Pages/default.aspx>
- Building User Guide:
<http://intranet.lothian.scot.nhs.uk/Directory/Facilities/RHCYPandDCNFacilities>

Ward/Dept Names & Locations

RHCYP Ward or Dept Name		Specialty
Borthwick	Level 3	Neurosciences & Neurophysiology
Castle Mey	Ground	Acute receiving unit
Clinical Research (Paediatric)	Level 1	Paediatric Clinical Research
Crichton	Level 1	Day case surgical unit
Critical Care	Level 1	Critical Care
Dalhousie	Level 3	Medical inpatients
Dental	Ground	Dental
Dunvegan	Level 3	Surgical ward
Dirleton	Level 3	Planned investigations
Emergency Department	Ground	Accident and Emergency
Kildrummy	Level 3	Sleep Lab
Lochranza (and Daycare)	Level 3	Haematology & Oncology
Melville Unit	Ground	Child and Adolescent Mental Health Services (CAMHs)
Neurophysiology	Level 3	Neurophysiology (within Borthwick Ward)
Outpatients Department	Ground & Level 1	Multi-specialty outpatients (includes audiology, dental and AHP Therapies - SLT, physio, OT & Dietetics)
Theatres	Level 1	Surgery
Wards 230 & 231	Level 2	Department of Clinical Neurosciences (DCN)

Eating & Drinking: Edinburgh Children's Hospital Charity Shop

Located within the Atrium on the ground floor (past the main reception), the shop provides a selection of healthy snacks, gifts, cards and a small selection of groceries and toiletries, magazines, and newspapers.



Opening times:
Monday to Friday
 7.30am – 6.30pm
 &
Saturday & Sunday
 10am – 3.30pm



Eating & Drinking: Grab and Go



Located on the ground floor, near the Charity shop.

- Hot & cold drinks
- Breakfast rolls
- Sandwiches
- Toasties / Paninis / Flat breads
- 4 Cheese Pizza baguettes
- Home baking
- Crisps

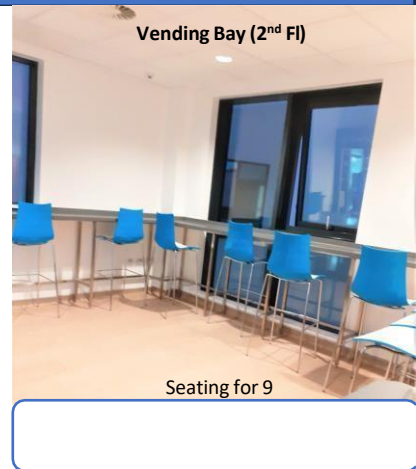
Opening Times:
7.30 am - 4.30 pm

**Please check at the hospital for up-to date opening times, as these may vary*



Vending machines are available 24 hours a day, with hot and cold drinks, snacks and confectionery.

It is located on the 2nd floor in the Vending Bay. Some seating is also available in this area.



Male and female changing rooms can be found on Level 2, with toilets, showers, hairdryers, mirrors and lockers. Lockers need a £1 coin (or similar token) which is returned after each use.

Some departments have dedicated changing areas and lockers, including Catering, Emergency Department, Theatres and Imaging. Please don't hesitate to ask your colleagues or line manager how to find your nearest lockers and changing areas.

**Please be considerate to colleagues and empty lockers at the end of each shift.*



Rest Areas: Staff Break Rooms



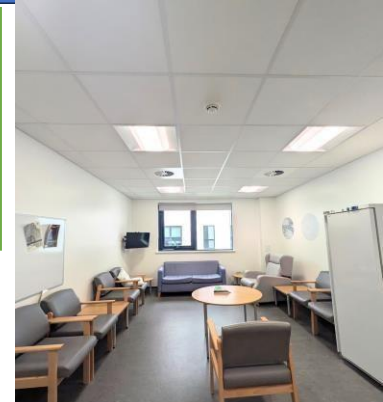
Castle Mey/ER Staff Room (Ground Fl)
Seating for 22 + recliner

Staff are welcome to use any break room – all are access controlled and can be entered by using a staff ID badge. Break rooms have tables, chairs, comfortable seating, fridges, microwaves, sinks and hydro hot / cold water taps.

**All staff are responsible for keeping facilities clean and removing out of date items from the fridge.*



Outpatients Dept Staff Room (Ground Fl)
Seating for 25 + recliner



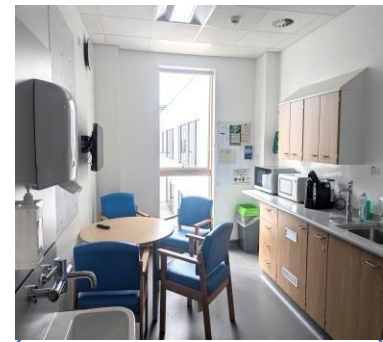
2nd Floor Staff Room (near Vending Bay)
Seating for 10 + 2-seater sofa + recliner



Clinical Service Office Staff Room (2nd Fl)
Seating for 10

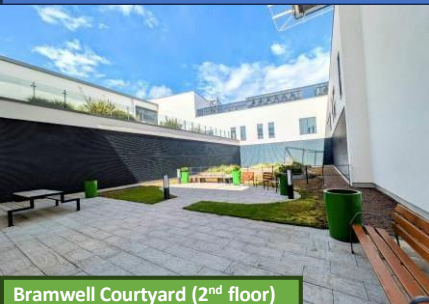


3rd Floor Staff Room
Seating for 20



Clinical Management Office Staff Room (4th Fl) Seating for 4

Outdoors Spaces: Courtyards & Terraces



Bramwell Courtyard (2nd floor)

There are several accessible courtyards and terraces for staff to enjoy the fresh air and the outside environment. Outdoor spaces have been designed to be interesting, with areas to explore, outdoor seating and landscaped plants, stones and objects.

Access to these spaces will usually be available between 8am and 8pm by using your staff badge. Access the Bramwell Courtyard by bleeping the DCN resource nurse on 8108 for the key. The Lochranza and Bramwell courtyards cannot be used when the helideck is in use for safety reasons. Please leave these areas promptly when asked. Thank you!



Staff Courtyard (Gd floor)

The Sanctuary is open for everyone to use. It offers space for quiet reflection, prayer or meditation with access to a courtyard which has a labyrinth. Located on the ground floor, next to Castle Mey, the Sanctuary includes a washing area and access to outdoor space. Find out more:

<https://children.nhslthian.scot/parents-and-carers/spiritual-care/>



Sanctuary Courtyard (Gd floor)



Clinical Management Office Terrace (4th floor)

Two Terraces are available for staff use located on the 4th floor.

Access them from:

- the Restaurant (for staff and patients & families)
- the Clinical Management Office (for staff via far door next to CAMHs area)



Terrace (4th floor)